



EVIA



By





TAKE SUMMER TO NEW LEVELS



A WORD FROM OUR **CHAIRMAN**

Innovation, design, and international standards of quality are three elements that run deep within our essence, they are what set us apart from competitors and what push us with every new project to be trendsetters within the Egyptian real estate market. In collaboration with highly qualified engineering and design firms and consultants, Mountain View has successfully enhanced thousands of customers' living experiences in more than 10 projects all around Egypt. That means Mountain View always endeavors to develop prime locations within the blissful, diverse lands of Egypt. Take Ras El Hikma for example; a graceful plot of land that we realized its potential, decided to develop the only livable project there and built many phases influenced by the beautiful Greek architecture that brings Greece to these very shores, including our latest phase, Crete Islands, where we bring together every bit of world-class innovations, interesting designs, and experience that we gathered along the way, to continue what we started years ago; perfecting futures.

Amr Soliman
CEO of Mountain View

OUR PHILOSOPHY

We believe that our trade isn't about steel and concrete, but about helping grow happy families. We try to use every tool and method we can get our hands on, only to guarantee that our customers are happy. It is our belief that homes should be about people before they have people in them. That's why every Mountain View structure is built for one purpose only, that is to create respectful communities where our customers' lives are as easy, as comfortable, and as enjoyable, as they can get.



LOCATION MAP

The happy life of Mountain View Ras El Hikma Can be found in a strategic spot: under 3 hours from Cairo through the new Daba'a Road, 2 hours from Alexandria, and just 35 minutes from Sidi Abdulrahman. You will be in the heart of the New Sahel in the new City of Ras El Hikma; Egypt's newest global destination and the hottest first-class tourist attraction for European and international tourists in the Mediterranean region. With 11 unique districts, diversified economy, and a major clean energy corridor, the vibrant new city will put you only 15 KM east of North Coast and 50 KM west of El Alamein Airport.



MASTER PLAN

Mountain View Ras El Hikma project is differentiated by its Greek-style architecture, where each phase is named after a Greek island, while preserving the sense authenticity deeply rooted in all of us.

- 1. ITALIAN VILLAGE
- 2. EMARAT MISR
- 3. Rhodes
- 4A. Crete
- 4B. Skala heights
- 5A. Paros heights
- 5B. SKALA APTS HOTEL
(BRANDED & SERVICED)
- 6. Hotel & Retail
- 7. CRYSTAL LAGOONS
- 8. PAROS
- 9. SKALA SEAFRONT
- 10. MV NC
- 11. EVIA
- 12. Agora Village
- 13. DIPLO



Greek Architecture: The Secret to a Great Summer

Every little corner in Mountain View Ras El Hikma is inspired by the truly majestic Greek architecture, and it turned out to be the perfect influence to give a summer place. It creates this wonderful atmosphere of a wholesome family retreat by being a safe place so elegant yet simple and modest. Its sense of tranquility and vastness makes you feel how cozy and welcoming it is. The Greek architecture is very open to nature to the point that it resembles the purest form of freedom, beauty, and joy; elements that make residents of Mountain View Ras El Hikma feel a form of unity and delight that they share this experience with their loved ones.



Vibrant Livability on a Grand Scale

From the moment you wake up in the morning to a sun-kissed dawn, there's always something exciting to do at MountainView Ras El Hikma. Whether you like chilling by the pool, tanning on the beach or taking a dip in the mesmerizing blue waters of the mediterranean, we promise you an unparalleled relaxing experience.



Pampered Privacy at the Ladies Beach

A joyful summer experience means that every preference is thoughtfully catered for. We understand the importance of a long awaited break for the ladies while ensuring their utmost privacy and welfare. Thus at Mountain View Ras El Hikma, we bring you our fully serviced, private, and absolutely safe Ladies Beach; where you can enjoy the water, indulge in the sun carefree, and take part in fun activities too! If this is important to you, it's very important to us!



A Magical Place for Kids Too!

Knowing your kids are having the time of their lives while being safe will give you extra peace of mind; that's why we've laid on plenty of fun with lots of games, activities, and animation shows to keep the young ones occupied all day, every day. In Mountain View Ras El Hikma, it's not just empty fun for your kids, we add meaning to fun with cycling classes and many other edutainment activities are available for all ages, so they can have the time of their lives while learning something new.



Your Friendly Neighborhood **Clubhouse**

At the Clubhouse, we've thought of everything to make life more welcoming. Meet your neighbors and make new friends, and bond with the respectful community around you in the comfortable and cozy setting that serves tasty food and beverages alongside our dedicated team at the CRM office always ready to help & constantly at your service.



Introduction
to **EVIA**



MASTER
PLAN

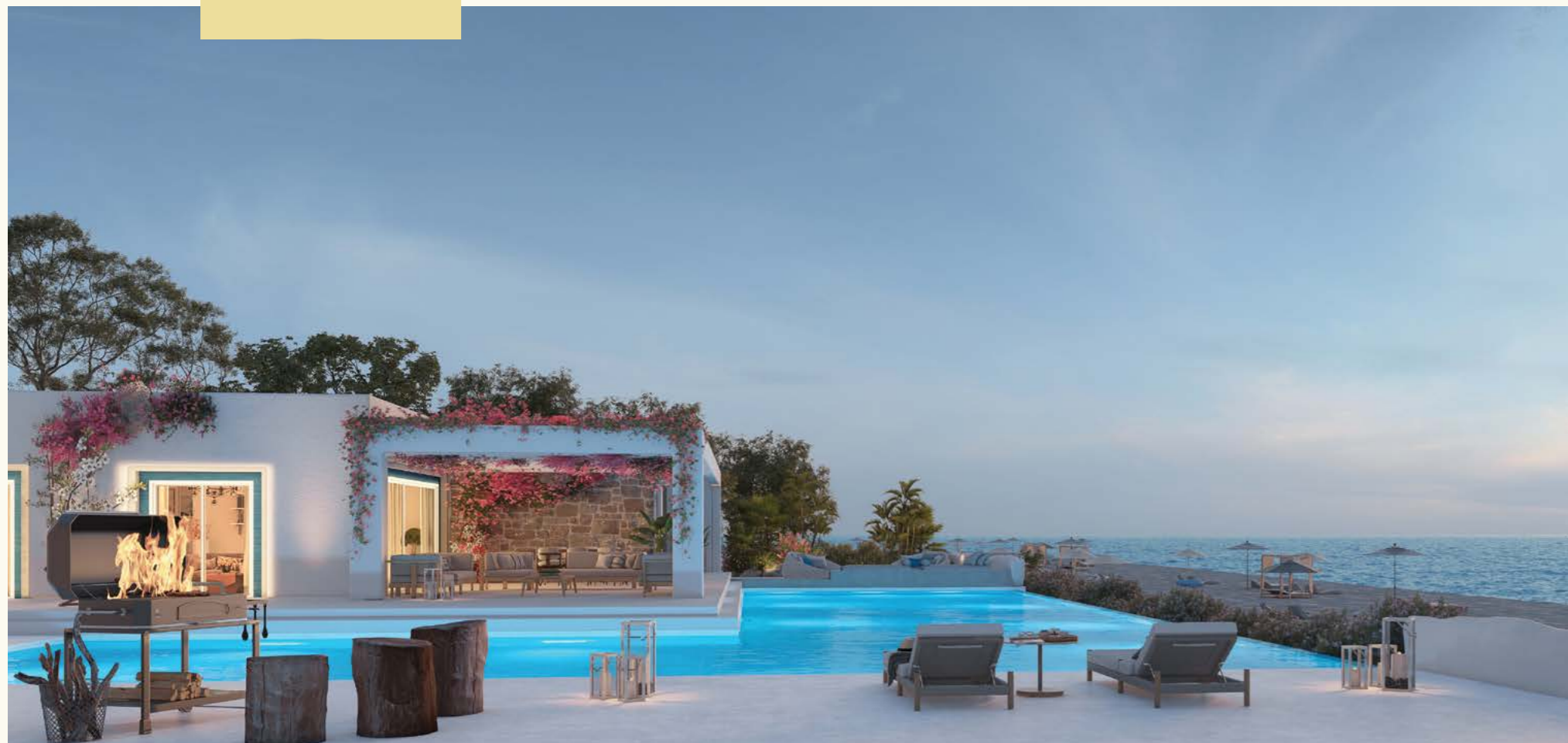




Floor Plans



Beach House





Twinhouse





Twinhouse

GROSS AREA: 155m²

GROUND FLOOR

SPACE	DIM (m)
TERRACE 1	4.30m x 1.30m
RECEPTION	3.25m x 6.10m
DINING, KITCHEN & STAIRS	5.00m x 4.75m
TOILET	1.00m x 2.00m
ENTRANCE	1.50m x 0.80m
MAID ROOM	1.65m x 2.10m
TERRACE 2	1.50m x 3.00m
MAID BATHROOM	1.50m x 1.45m



FIRST FLOOR

SPACE	DIM (m)
TERRACE 4	0.90m x 3.25m
M.BEDROOM 1	2.90m x 2.90m
M.BATHROOM 1	2.40m x 1.50m
M.LOBBY 1	2.10m x 1.30m
M.DRESSING 1	2.10m x 1.50m
M.BEDROOM 2	3.25m x 3.35m
STAIRS	4.00m x 1.00m
FAMILY LIVING	3.50m x 3.00m
M.BATHROOM 2	1.65m x 1.75m
TERRACE 3	2.00m x 1.50m
M.LOBBY 3	1.65m x 1.20m
M.BEDROOM 3	3.25m x 3.35m
M.BATHROOM 3	1.65m x 1.80m





Townhouse



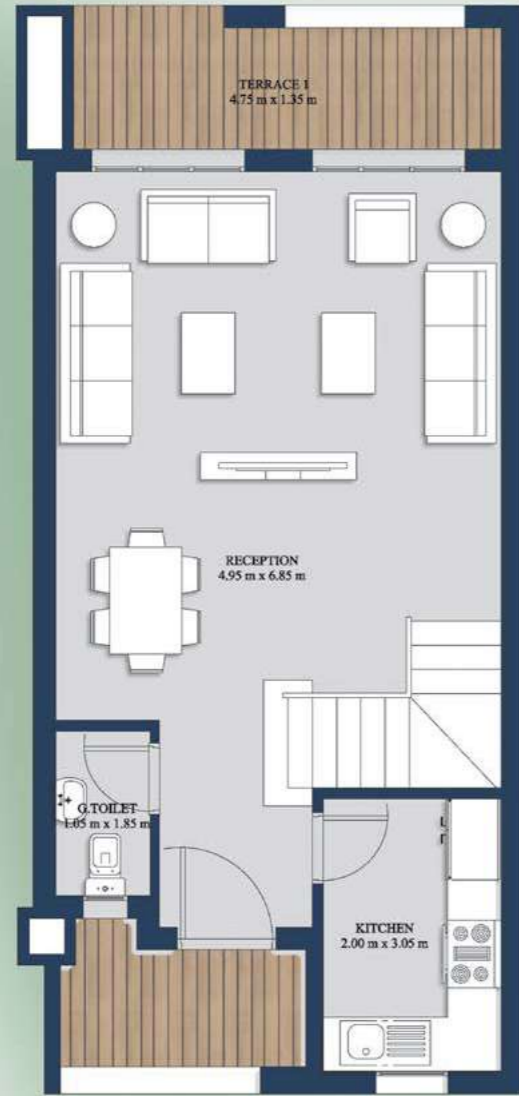


Townhouse Corner

GROSS AREA: 170m²

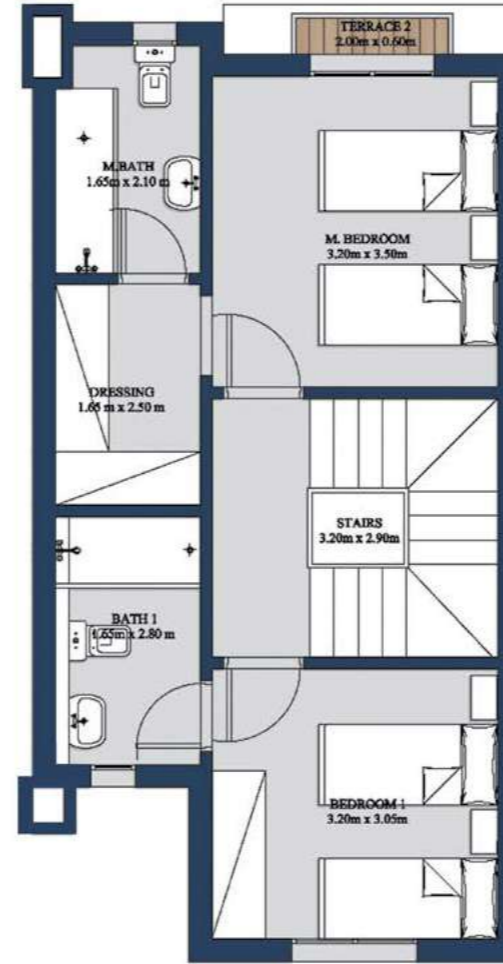
GROUND FLOOR

SPACE	DIM (m)
TERRACE 1	4.75m X 1.35m
LIVING ROOM & DINNING	4.95m x 6.85m
KITCHEN	2.00m x 3.05m
G.TOLLET	1.05m x 1.85m



FIRST FLOOR

SPACE	DIM (m)
STAIRS & LOBBY	3.20m x 2.90m
M.BEDROOM	3.20m x 3.50m
M.DRESSING	1.65m x 2.50m
M.BATHROOM	1.65m x 2.10m
BEDROOM 1	3.20m x 3.05m
BATHROOM	1.65m x 2.80m
TERRACE 2	2.00m x 0.60m



ROOF

SPACE	DIM (m)
TERRACE 3	4.95m x 3.45m
LIVING AREA	2.85m x 3.10m
STAIRS	3.20m x 2.90m
BATHROOM	1.60m x 1.80m
TERRACE 4	1.50m x 1.00m
BEDROOM 2	3.20m x 2.80m



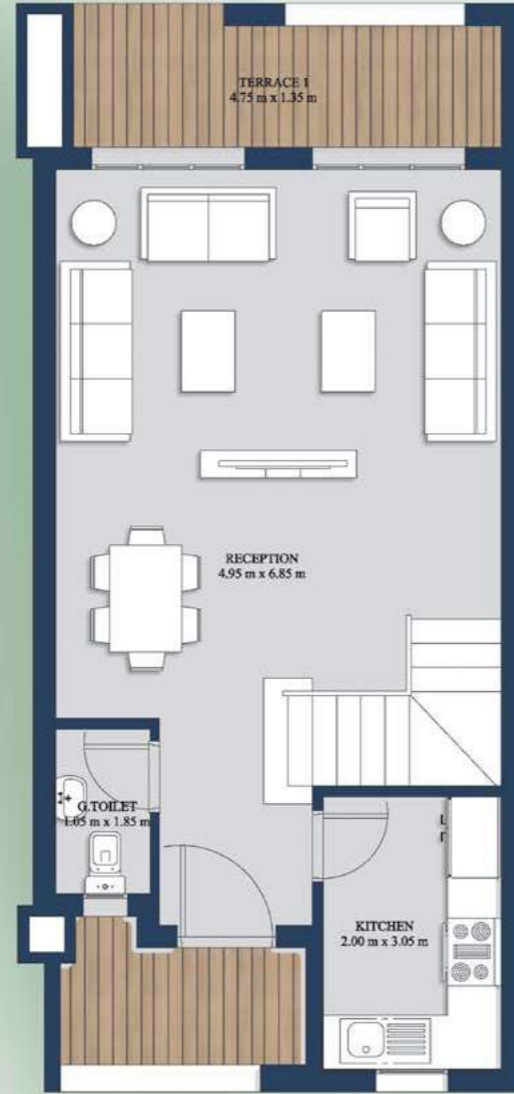


Townhouse Middle

GROSS AREA: 170m²

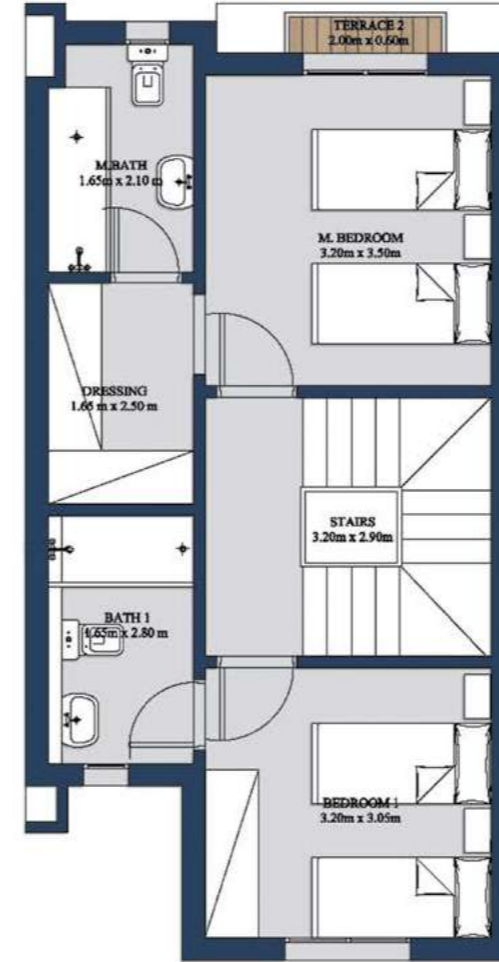
GROUND FLOOR

SPACE	DIM (m)
TERRACE 1	4.75m X 1.35m
LIVING ROOM & DINNING	4.95m x 6.85m
KITCHEN	2.00m x 3.05m
G.TOLLET	1.05m x 1.85m



FIRST FLOOR

SPACE	DIM (m)
STAIRS & LOBBY	3.20m x 2.90m
M.BEDROOM	3.20m x 3.50m
M.DRESSING	1.65m x 2.50m
M.BATHROOM	1.65m x 2.10m
BEDROOM 1	3.20m x 3.05m
BATHROOM	1.65m x 2.80m
TERRACE 2	2.00m x 0.60m



ROOF

SPACE	DIM (m)
TERRACE 3	4.95m x 3.45m
LIVING AREA	2.85m x 3.10m
STAIRS	3.20m x 2.90m
BATHROOM	1.60m x 1.80m
TERRACE 4	1.50m x 1.00m
BEDROOM 2	3.20m x 2.80m





Chalet
3 Bedrooms





**Chalet
3 Bedrooms
Type A**

GROSS AREA: 132m²

GROUND FLOOR

SPACE	DIM (m)
TERRACE	3.95m x 1.40m
LIVING ROOM	3.95m x 6.45m
M.BEDROOM	3.65m x 2.90m
M.BATHROOM	2.60m x 1.70m
BEDROOM	2.90m x 2.90m
BEDROOM	4.05m x 3.15m
BATHROOM	2.60m x 1.70m
KITCHEN	2.85m x 2.40m



**Chalet
3 Bedrooms
Type A**

GROSS AREA: 125m²

FIRST FLOOR

SPACE	DIM (m)
TERRACE	3.95m x 2.70m
LIVING ROOM	5.15m x 3.95m
M.BEDROOM	3.65m x 2.90m
M.BATHROOM	2.60m x 1.70m
BEDROOM	2.90m x 2.90m
BEDROOM	4.05m x 3.00m
BATHROOM	2.60m x 1.70m
KITCHEN	2.85m x 2.40m





Chalet 3 Bedrooms

Type A

GROSS AREA: 125m²

SECOND FLOOR PLAN

SPACE	DIM (m)
TERRACE	3.95m x 2.70m
LIVING ROOM	5.15m x 3.95m
M.BEDROOM	2.90m x 3.75m
M.BATHROOM	1.70m x 2.60m
BEDROOM	2.88m x 2.88m
BEDROOM	3.00m x 4.05m
BATHROOM	1.70m x 2.60m
KITCHENETTE	2.40m x 2.85m



ROOF

SPACE	DIM (m)
GROSS AREA	70m ²





Chalet 3 Bedrooms Type B

GROSS AREA: 132m²

GROUND FLOOR

SPACE	DIM (M)
LIVING ROOM	3.95m x 6.45m
KITCHEN	3.95m x 2.40m
BEDROOM 1	3.00m x 3.00m
BEDROOM 2	3.00m x 3.00m
BATHROOM	1.90m x 1.80m
M.BEDROOM	4.45m x 3.20m
M.BATHROM	1.80m x 2.00m
TERRACE	3.95m x 1.40m

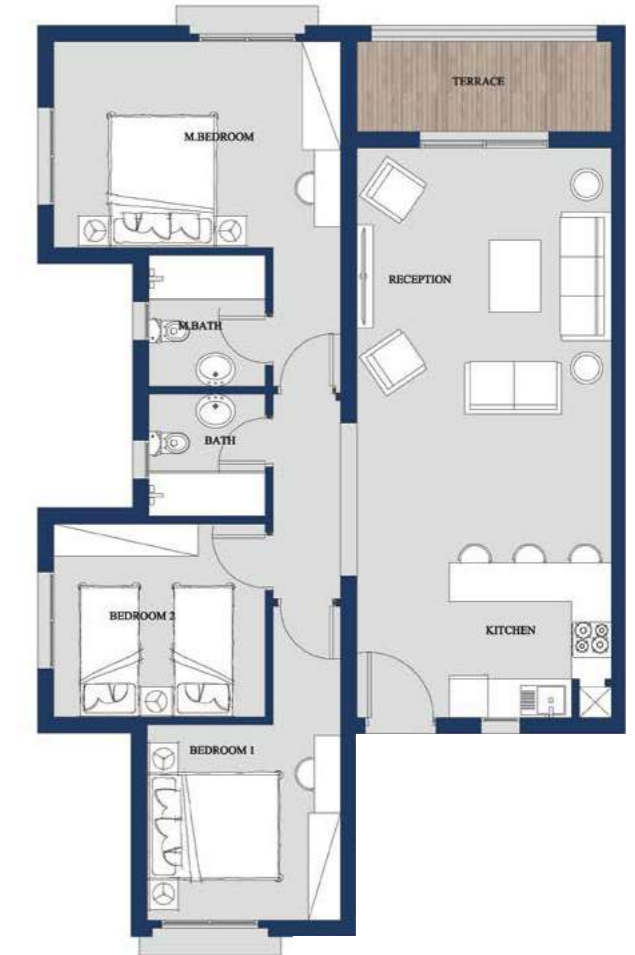


Chalet 3 Bedrooms Type B

GROSS AREA: 125m²

FIRST FLOOR

SPACE	DIM (M)
LIVING ROOM	3.95m x 6.45m
KITCHEN	3.95m x 2.40m
BEDROOM 1	3.00m x 3.00m
BEDROOM 2	3.00m x 3.00m
BATHROOM	1.90m x 1.80m
M.BEDROOM	4.45m x 3.20m
M.BATHROM	1.80m x 2.00m
TERRACE	3.95m X 1.40m





Chalet 3 Bedrooms

Type B

GROSS AREA: 125m²

GROUND FLOOR

SPACE	DIM (m)
LIVING ROOM	3.95m x 6.45m
KITCHEN	3.95m x 2.40m
BEDROOM 1	3.00m x 3.00m
BEDROOM 2	3.00m x 3.00m
BATHROOM	1.90m x 1.80m
M.BEDROOM	4.45m x 3.20m
M.BATHROM	1.80m x 2.00m
TERRACE	3.95m x 1.40m



ROOF

SPACE	DIM (m)
GROSS AREA	70m ²





Chalet
2 Bedrooms





Chalet 2 Bedrooms

GROSS AREA: 92m²

GROUND FLOOR

SPACE	DIM (m)
LIVING ROOM	3.80m x 4.85m
TERRACE	1.20m x 3.70m
M.BEDROOM	3.20m x 3.00m
M.BATHROOM	1.70m x 2.00m
BEDROOM	3.00m x 3.20m
BATHROOM	1.70m x 2.00m
KITCHENETTE	3.80m x 2.20m



Chalet 2 Bedrooms

GROSS AREA: 92m²

FIRST FLOOR

SPACE	DIM (m)
LIVING ROOM	3.80m x 3.55m
TERRACE	3.70m x 2.10m
M.BEDROOM	3.20m x 3.00m
M.BATHROOM	1.70m x 2.00m
BEDROOM	3.00m x 3.20m
BATHROOM	1.70m x 2.00m
KITCHENETTE	3.80m x 2.20m





Chalet

2 Bedrooms

GROSS AREA: 92m²

SECOND FLOOR

SPACE	DIM (m)
LIVING ROOM	3.80m x 3.55m
TERRACE	3.70m X1.10m
M.BEDROOM	3.20m x 3.00m
M.BATHROOM	1.70m x 2.00m
BEDROOM	3.00m x 3.20m
BATHROOM	1.70m x 2.00m
KITCHENETTE	3.80m x 2.20m



ROOF

SPACE	DIM (m)
GROSS AREA	50m ²





Heights Chalet 2 Bedrooms

GROSS AREA: 108m²

G2

SPACE	DIM (m)
LIVING ROOM	3.60m x 3.45m
KITCHEN	3.60m x 3.37m
BEDROOM	4.25m x 3.00m
BATHROOM	2.20m x 1.70m
LOBBY1	1.40m x 1.15m
LOBBY2	1.92m x 1.16m
M.BEDROOM	3.00m x 3.00m
M.BATHROOM	1.92m x 1.72m
TERRACE 1	1.55m x 1.00m
TERRACE 2	3.47m x 1.92m

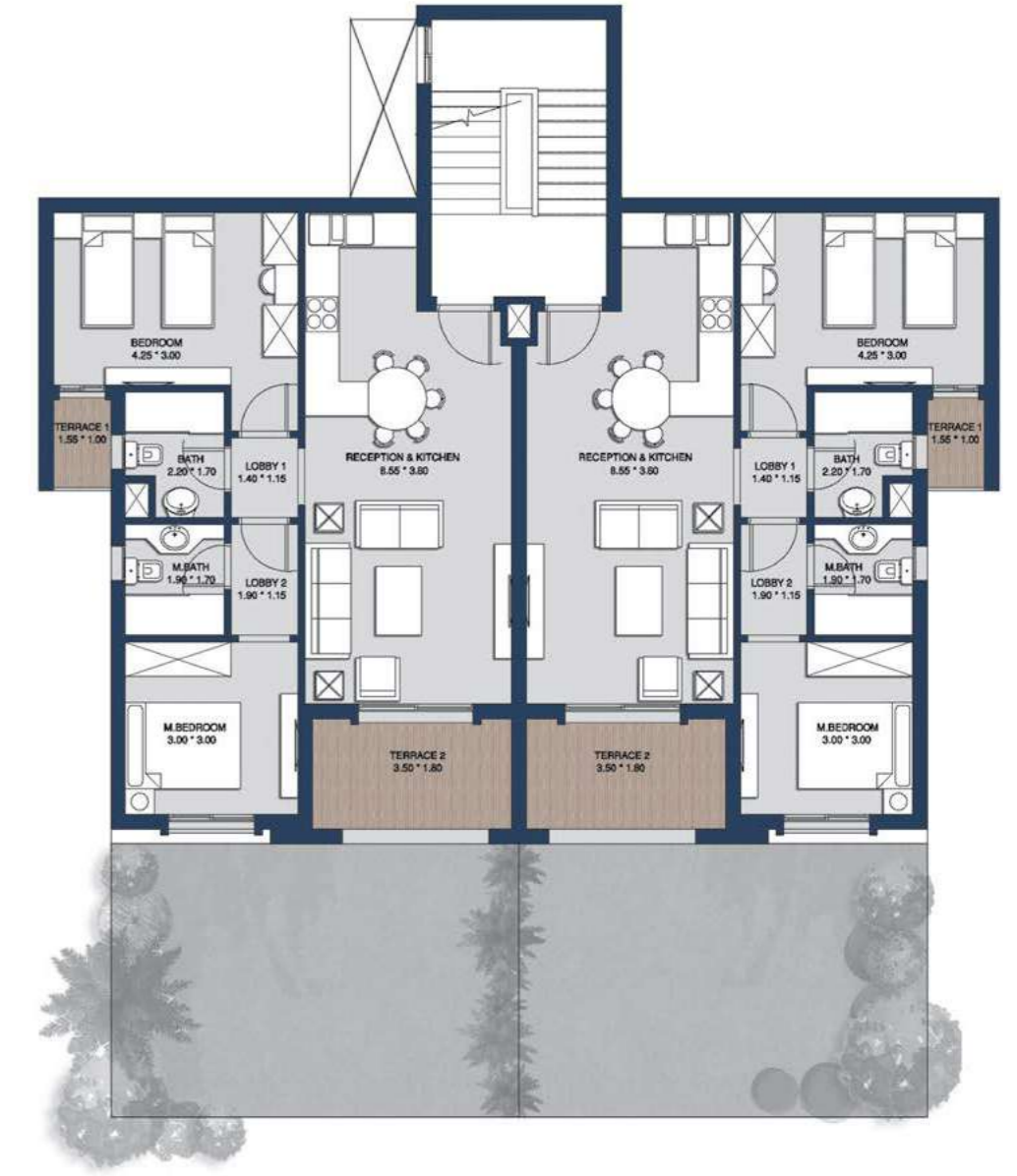


Heights Chalet 2 Bedrooms

GROSS AREA: 108m²

G1

SPACE	DIM (m)
LIVING ROOM	3.60m x 3.45m
KITCHEN	3.60m x 3.37m
BEDROOM	4.25m x 3.00m
BATHROOM	2.20m x 1.70m
LOBBY1	1.40m x 1.15m
LOBBY2	1.92m x 1.16m
M.BEDROOM	3.00m x 3.00m
M.BATHROOM	1.92m x 1.72m
TERRACE 1	1.55m x 1.00m
TERRACE 2	3.47m x 1.92m





Heights Chalet 3 Bedrooms

GROSS AREA: 115m²

GROUND FLOOR

SPACE	DIM (m)
LIVING ROOM	4.91m x 3.70m
KITCHEN	3.13m x 3.58m
BEDROOM 1	2.86m x 2.97m
BEDROOM 2	3.00m x 3.00m
BATHROOM	1.72m x 1.28m
M.BEDROOM	3.60m x 3.12m
M.BATHROOM	2.20m x 1.63m
DRESSING	1.26m x 1.63m
LOBBY	1.16m x 1.28m
TERRACE 1	2.46m x 1.00m
TERRACE 2	3.47m x 1.03m
TERRACE 3	3.00m x 0.39m

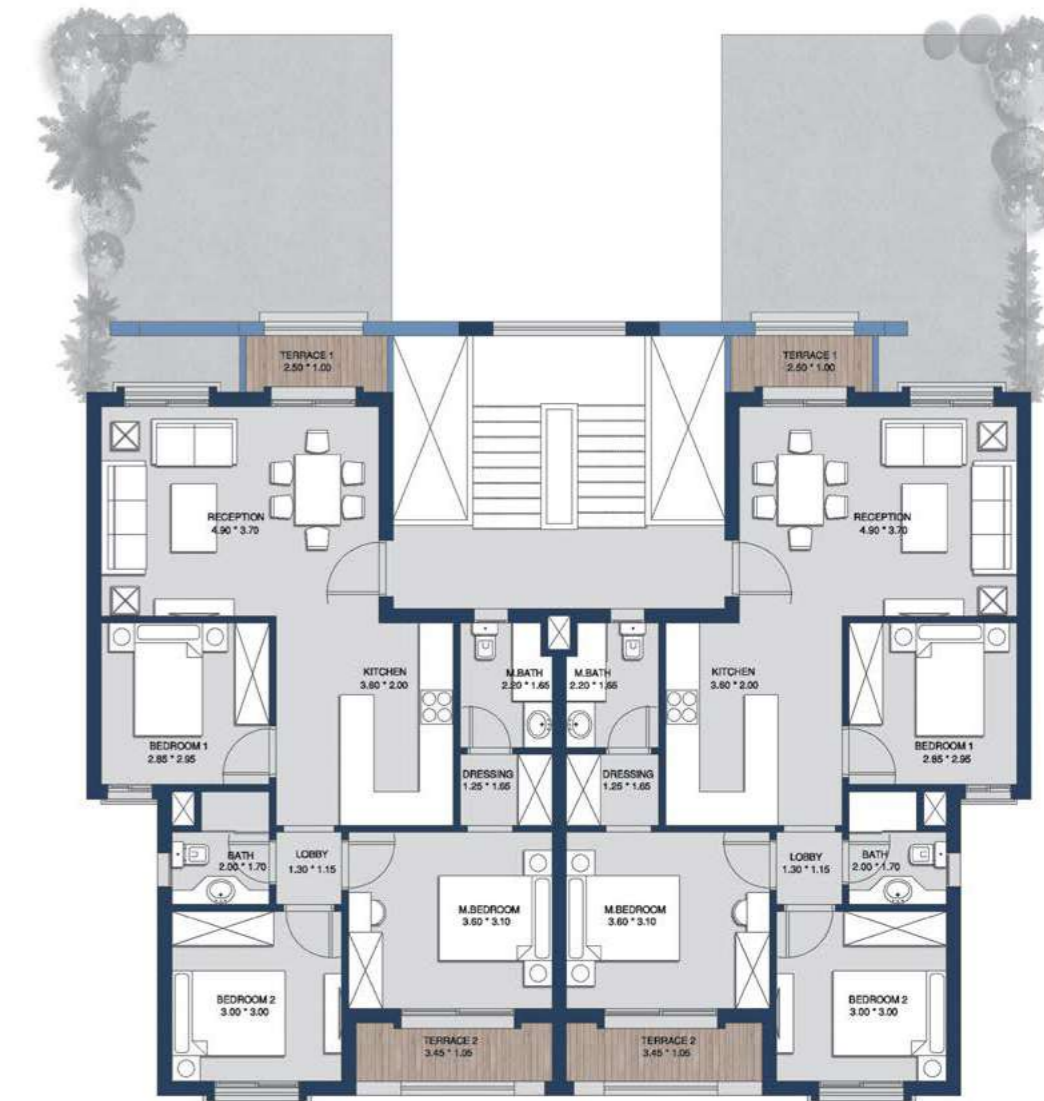


Heights Chalet 3 Bedrooms

GROSS AREA: 115m²

FIRST FLOOR

SPACE	DIM (m)
LIVING ROOM	4.91m x 3.70m
KITCHEN	3.13m x 3.58m
BEDROOM 1	2.86m x 2.97m
BEDROOM 2	3.00m x 3.00m
BATHROOM	1.72m x 1.28m
M.BEDROOM	3.60m x 3.12m
M.BATHROOM	2.20m x 1.63m
DRESSING	1.26m x 1.63m
LOBBY	1.16m x 1.28m
TERRACE 1	2.46m x 1.00m
TERRACE 2	3.47m x 1.03m



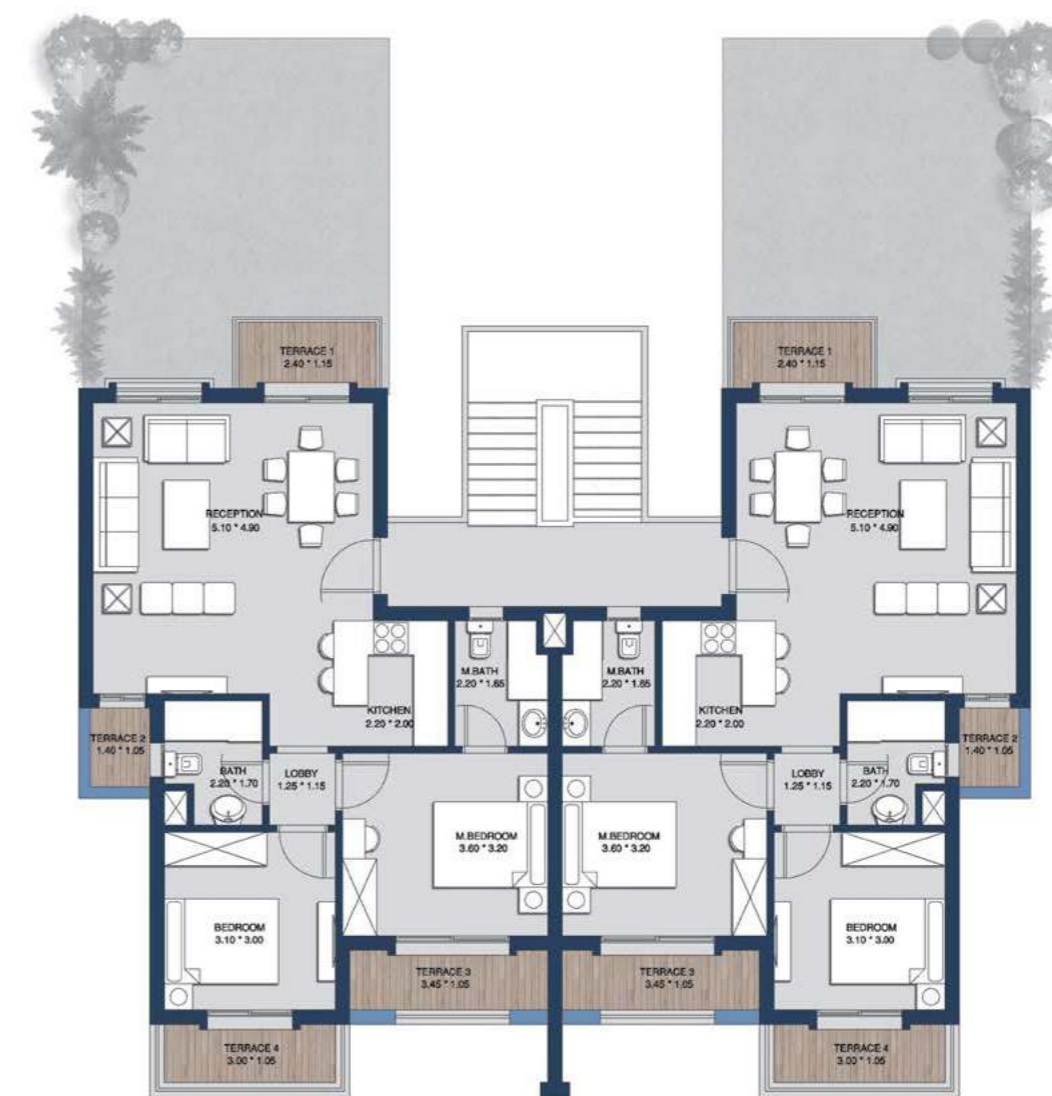


Heights Chalet 2 Bedrooms

GROSS AREA: 110m²

SECOND FLOOR

SPACE	DIM (m)
LIVING ROOM	4.91m x 3.82m
KITCHEN	3.13m x 3.20m
BEDROOM	3.00m x 3.12m
BATHROOM	1.72m x 1.28m
M.BEDROOM	3.60m x 3.20m
M.BATHROOM	2.20m x 1.63m
LOBBY	1.16m x 1.28m
TERRACE 1	2.46m X1.00m
TERRACE 2	1.05m x 1.38m
TERRACE 3	3.47m x 1.05m
TERRACE 4	3.00m x 1.03m





Greek Village Chalet & Roof Unit





Greek Village Chalet

2 Bedrooms

GROSS AREA: 85m²

GROUND FLOOR

SPACE	DIM (m)
RECEPTION	4.4m x 4.00m
KITCHEN	2.00M x 1.88M
BEDROOM 1	3.13m x 3.00m
BATHROOM	1.88m x 1.78m
M.BEDROOM	3.13m x 3.00m
M.BATHROOM	2.50m x 1.78m
TERRACE	2.00m x 1.78m



Greek Village Chalet

2 Bedrooms

GROSS AREA: 85m²

TYPICAL FLOOR

SPACE	DIM (m)
RECEPTION	4.40m x 4.00m
KITCHEN	2.00m x 1.88m
BEDROOM 1	3.13m x 3.00m
BATH	1.88m x 1.78m
M. BEDROOM	3.13m x 3.00m
M. BATH	2.50m x 1.78m
TERRACE	2.00m x 1.78m





Greek Village Chalet

3 Bedrooms

GROSS AREA: 110m²

GROUND FLOOR

SPACE	DIM (m)
RECEPTION	4.40m x 4.00m
KITCHEN	2.28m x 1.90m
BEDROOM 1	3.13m x 3.13m
BEDROOM 2	3.13m x 3.10m
M.BEDROOM	3.60m x 3.05m
M.BATHROOM	3.00m x 1.23m
BATHROOM	1.88m x 1.78m
TERRACE	2.00m x 1.78m



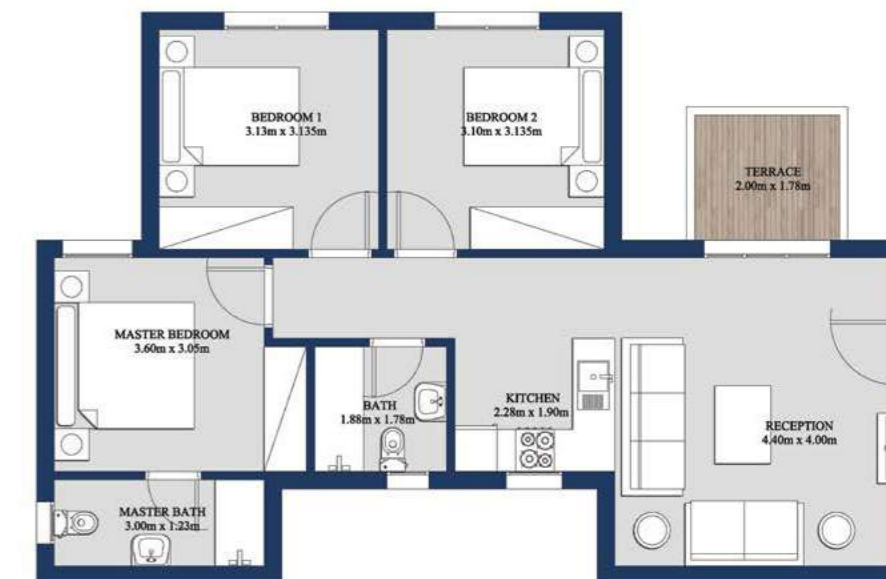
Greek Village Chalet

3 Bedrooms

GROSS AREA: 110m²

TYPICAL FLOOR

SPACE	DIM (m)
RECEPTION	4.40m x 4.00m
KITCHEN	2.28m x 1.90m
BEDROOM 1	3.13m x 3.13m
BEDROOM 2	3.13m x 3.10m
M. BEDROOM	3.60m x 3.05m
M. BATH	3.00m x 1.23m
BATH	1.88m x 1.78m
TERRACE	2.00m x 1.78m





Greek Village Roof Unit

1 Bedroom

GROSS AREA: 70m²

SPACE	DIM (m)
RECEPTION	4.00m x 4.40m
KITCHEN	2.00m x 1.75m
BATHROM	1.50m x 1.78m
BEDROOM	3.05m x 3.00m
TERRACE	14.20m ²



Greek Village Roof Unit

2 Bedrooms

GROSS AREA: 85m²

SPACE	DIM (m)
RECEPTION	4.00m x 4.40m
KITCHEN	2.00m x 2.28m
TOILET	1.37m x 1.78m
M.BEDROOM	3.60m x 3.05m
M.BATHROM	3.00m x 1.23m
BEDROOM 1	3.13m x 3.13m
TERRACE	3.00m x 2.95m ²

